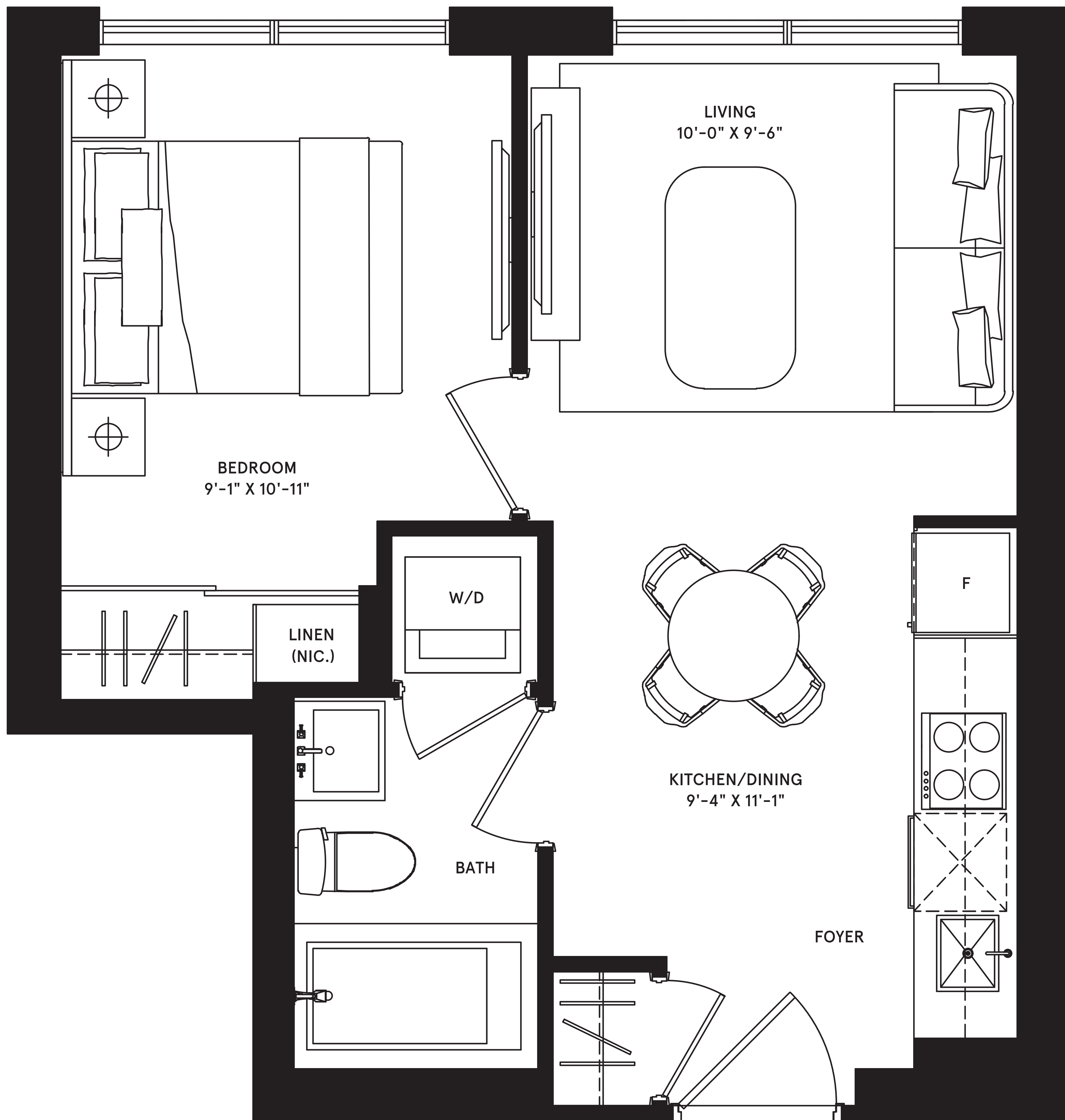


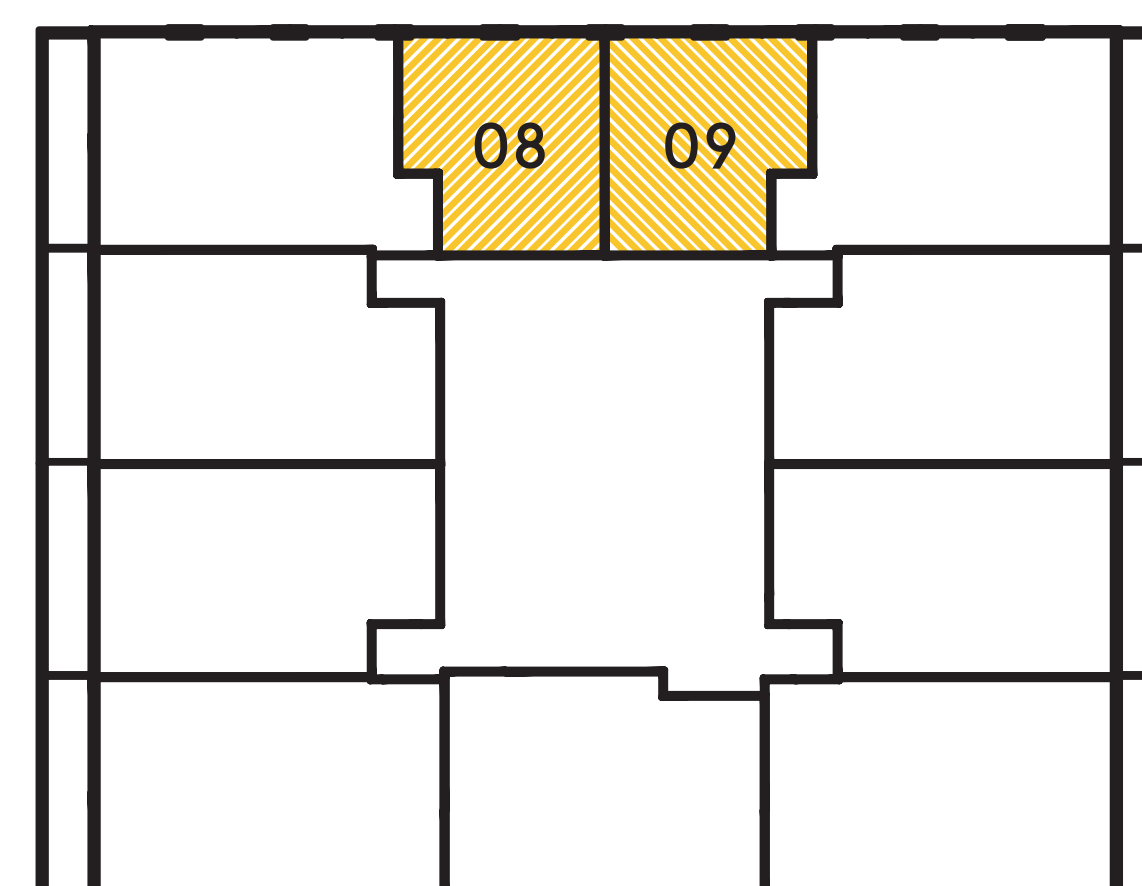


## 1 BEDROOM

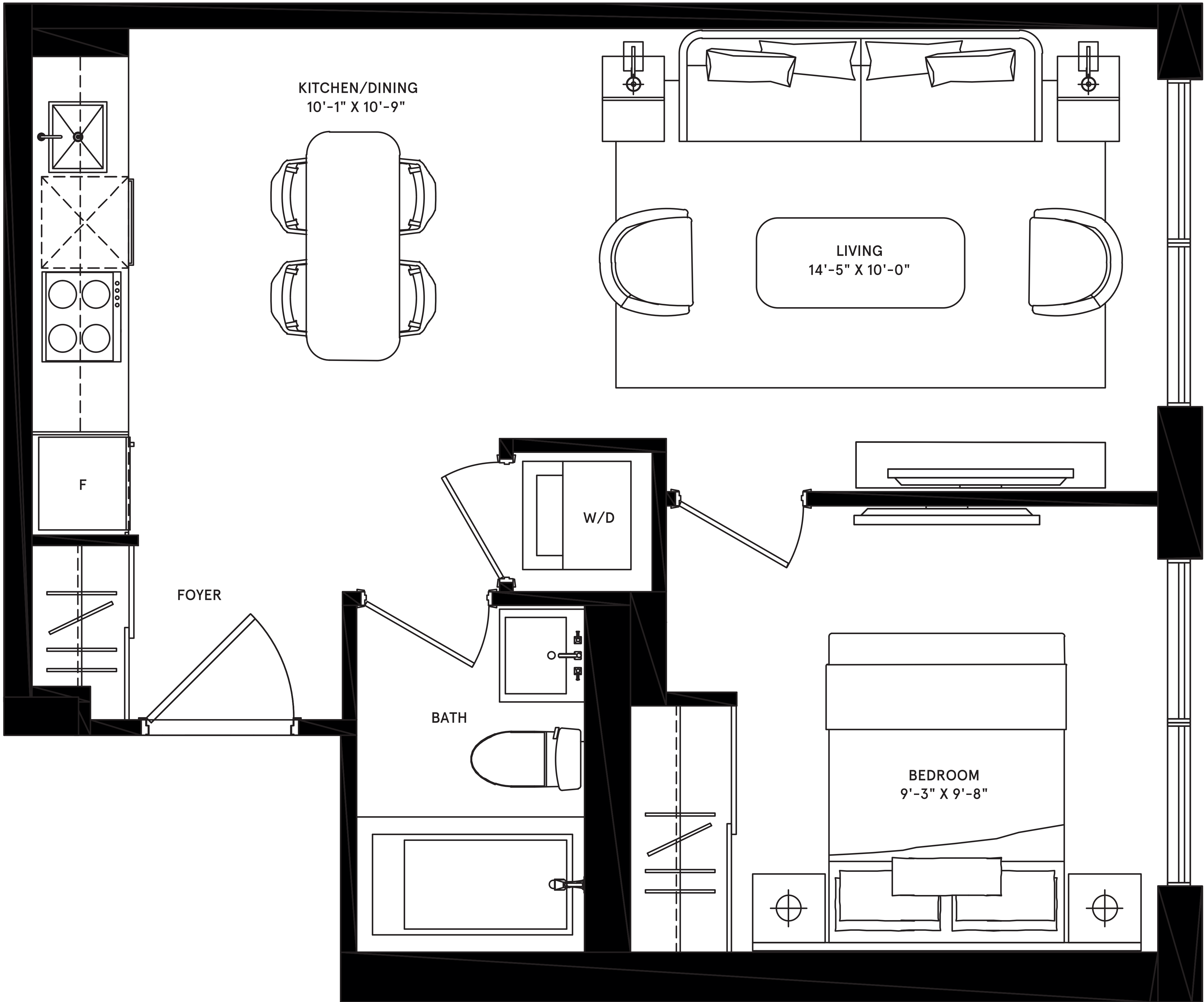
total: 420 sq.ft.



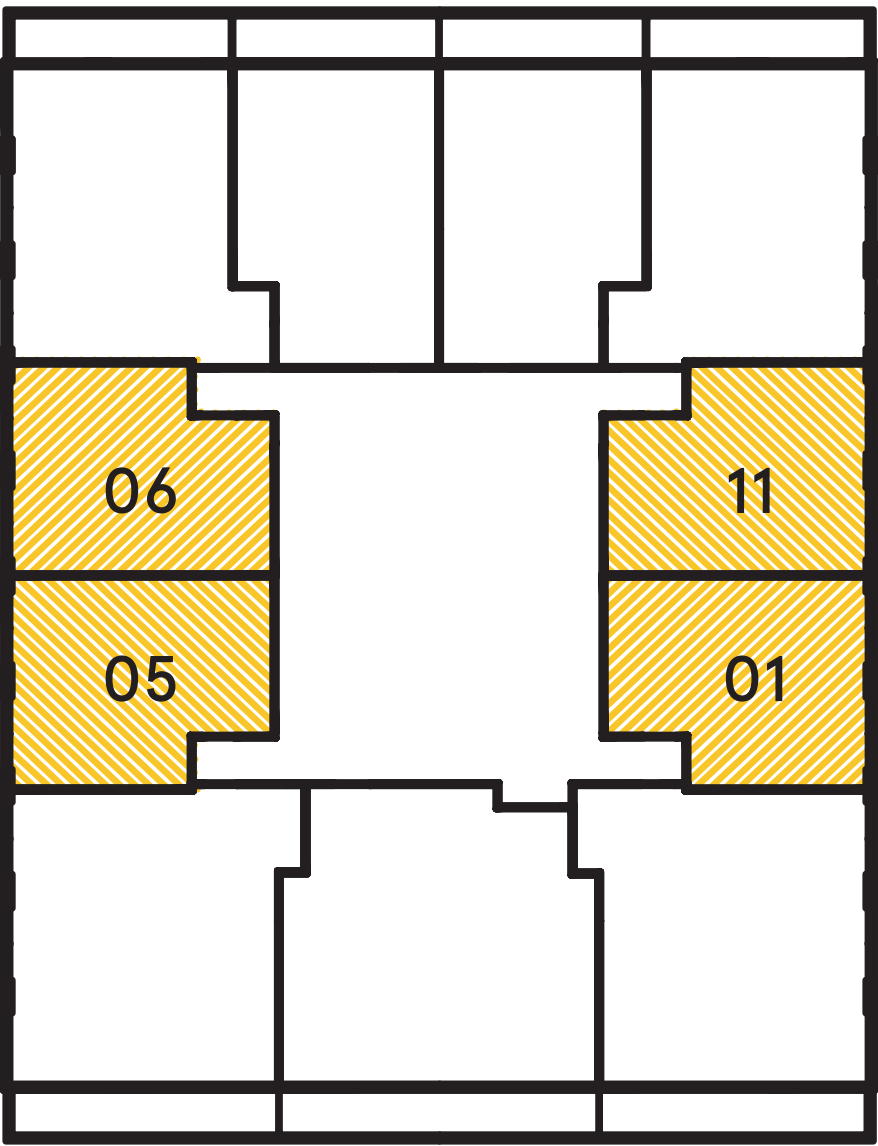
**LOWER – TYPICAL**



Dimensions, specifications, layouts (including but not limited to tile patterns), window sizes, mullions, fixture representation, appliance and fixture locations, and materials are approximate only, may vary, and are subject to changes without notice as provided in the Agreement of Purchase and Sale. Plans may be reversed. Wall thickness will vary with floor levels reducing room dimensions accordingly. Actual usable floor space may vary from the stated floor area. Measurements of rooms set forth on any floor plan are generally taken at the greatest points of each given room and centre line of windows (all the room were perfectly rectangular). Furniture is not included. Furniture shown on terrace spaces should be secured for safety. Prices are subject to change without notice. E. & O. Plans are not to scale. For more information on the method used for calculating floor area of any unit, reference should be made to Builder Bulletin No. 22 published by Tarion.



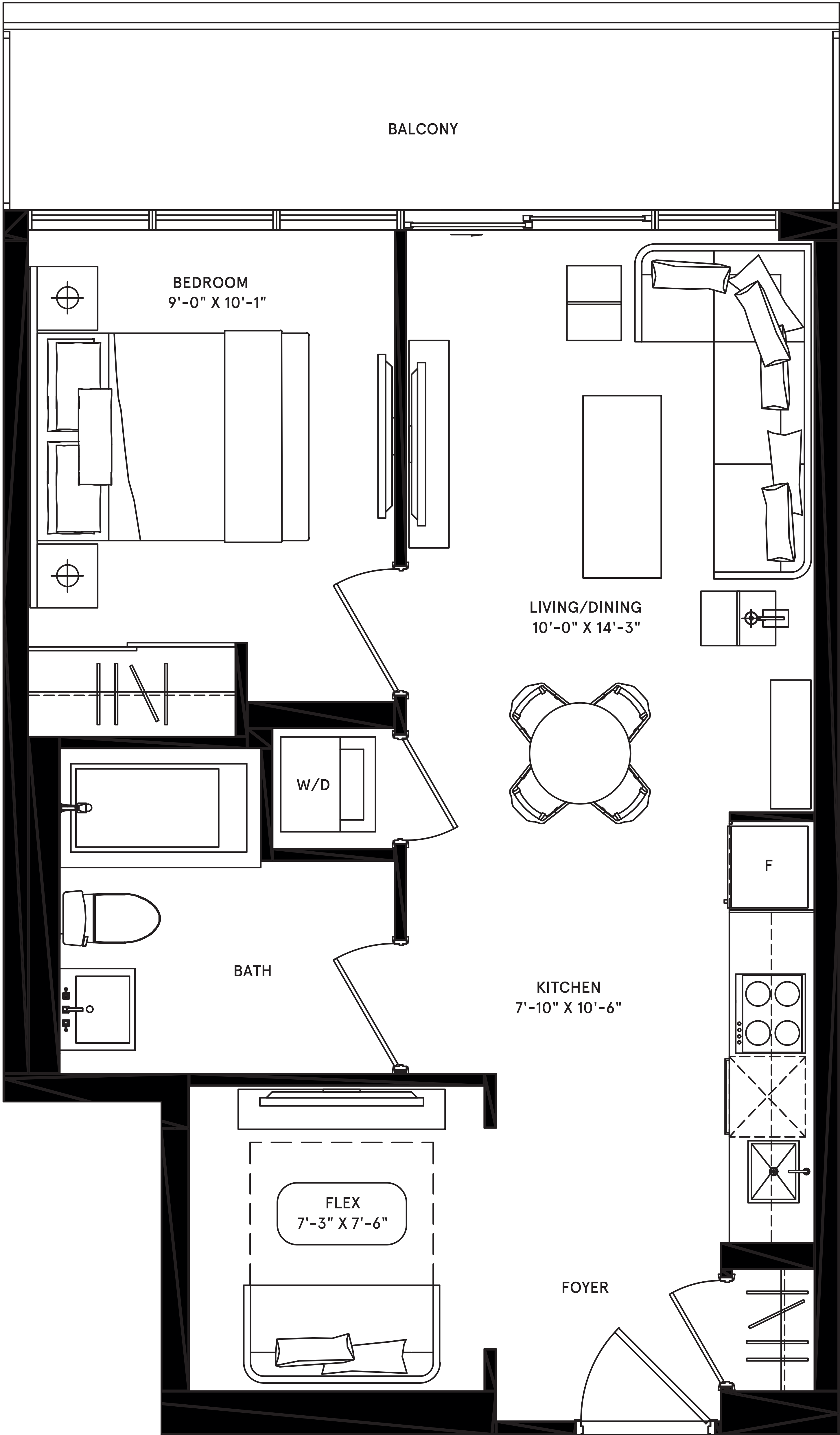
NORTH  
UPPER – TYPICAL



hanoi

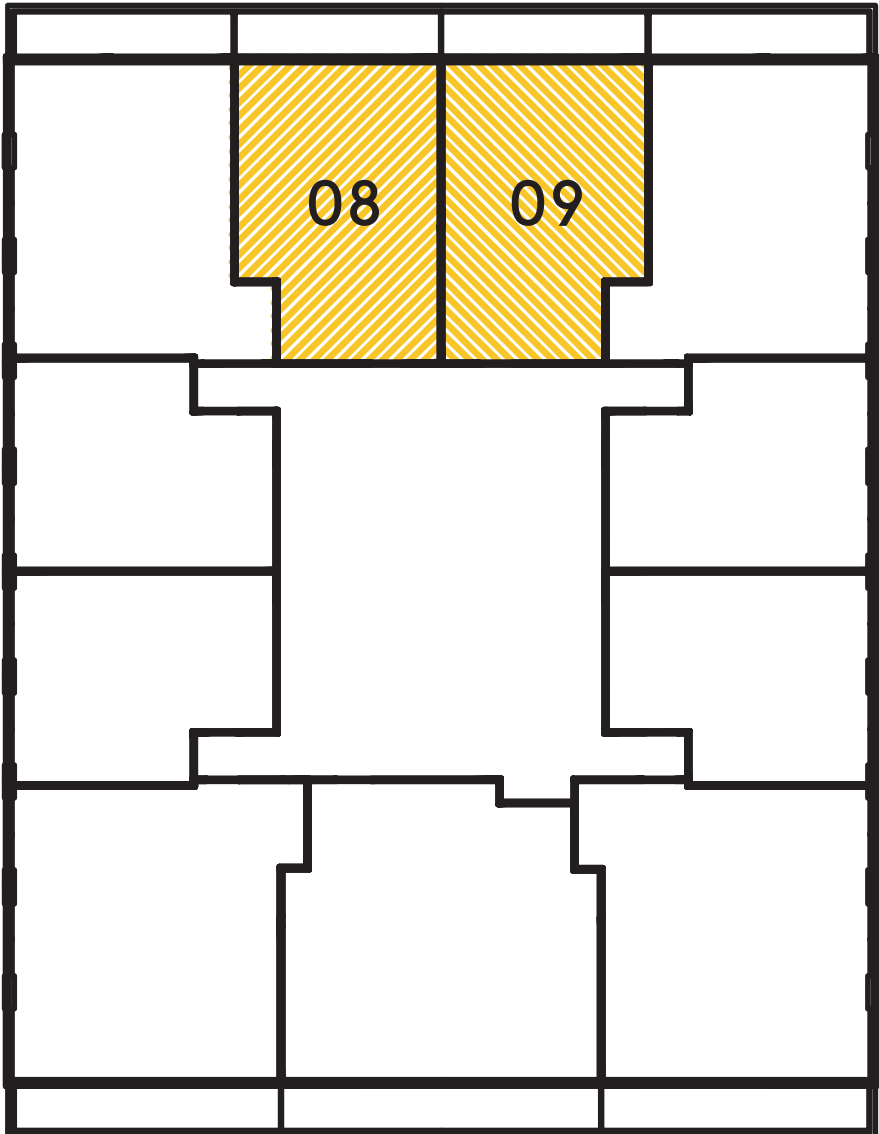
1 BEDROOM + FLEX  
total: 673 sq.ft.

interior: 575 sq.ft.  
exterior: 98 sq.ft.



NORTH

UPPER – TYPICAL



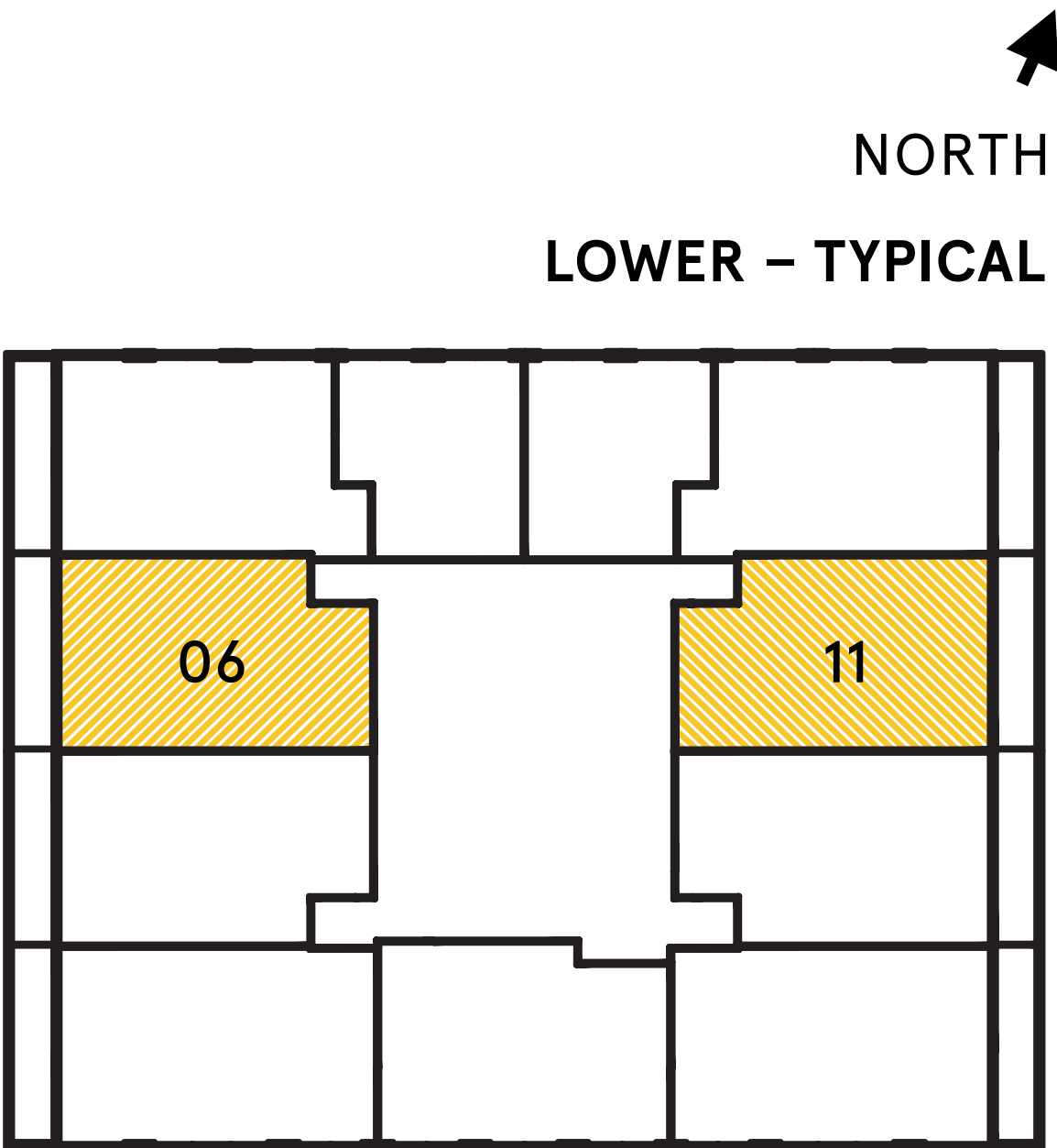
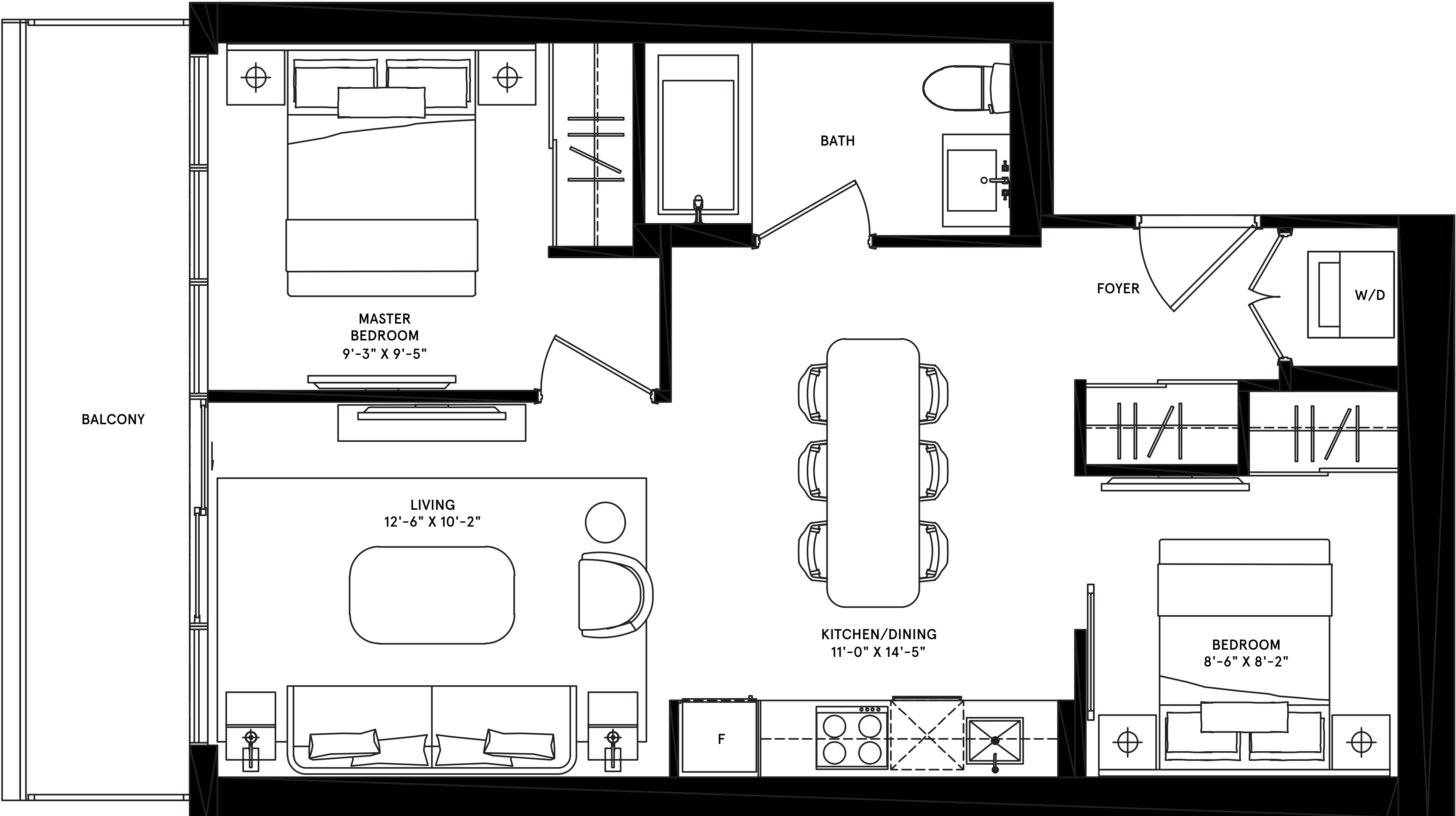


EX 2

oxford

2 BEDROOM  
total: 761 sq.ft.

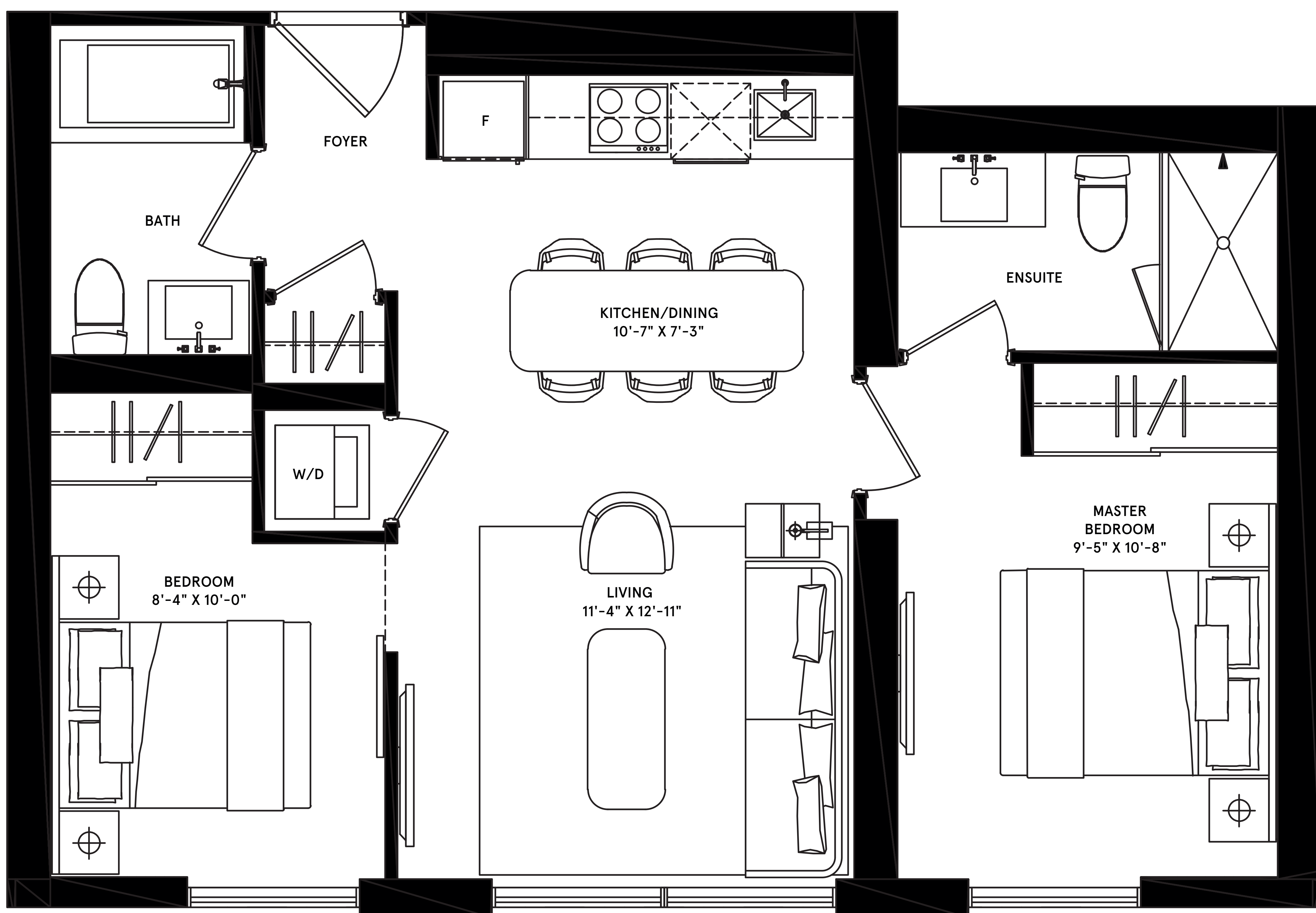
interior: 665 sq.ft.  
exterior: 96 sq.ft.



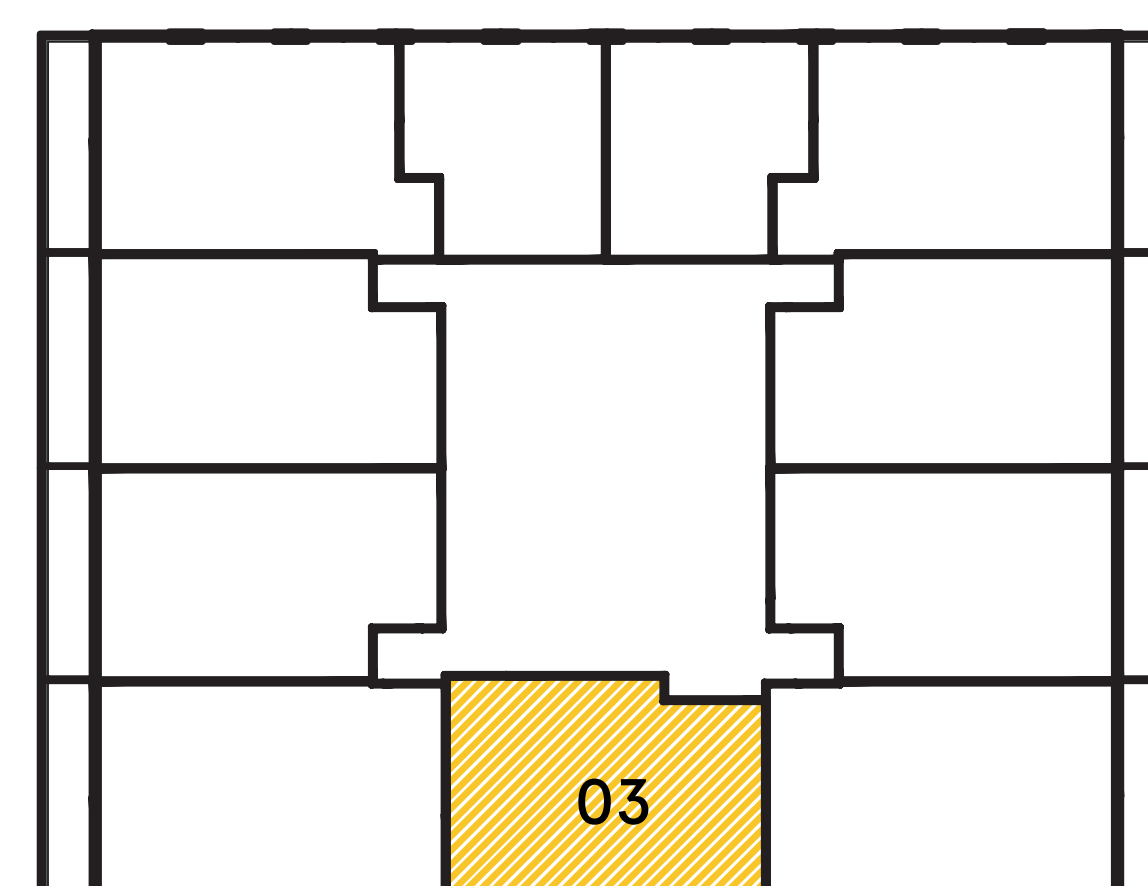


## 2 BEDROOM

total: 675 sq.ft.



**LOWER – TYPICAL**



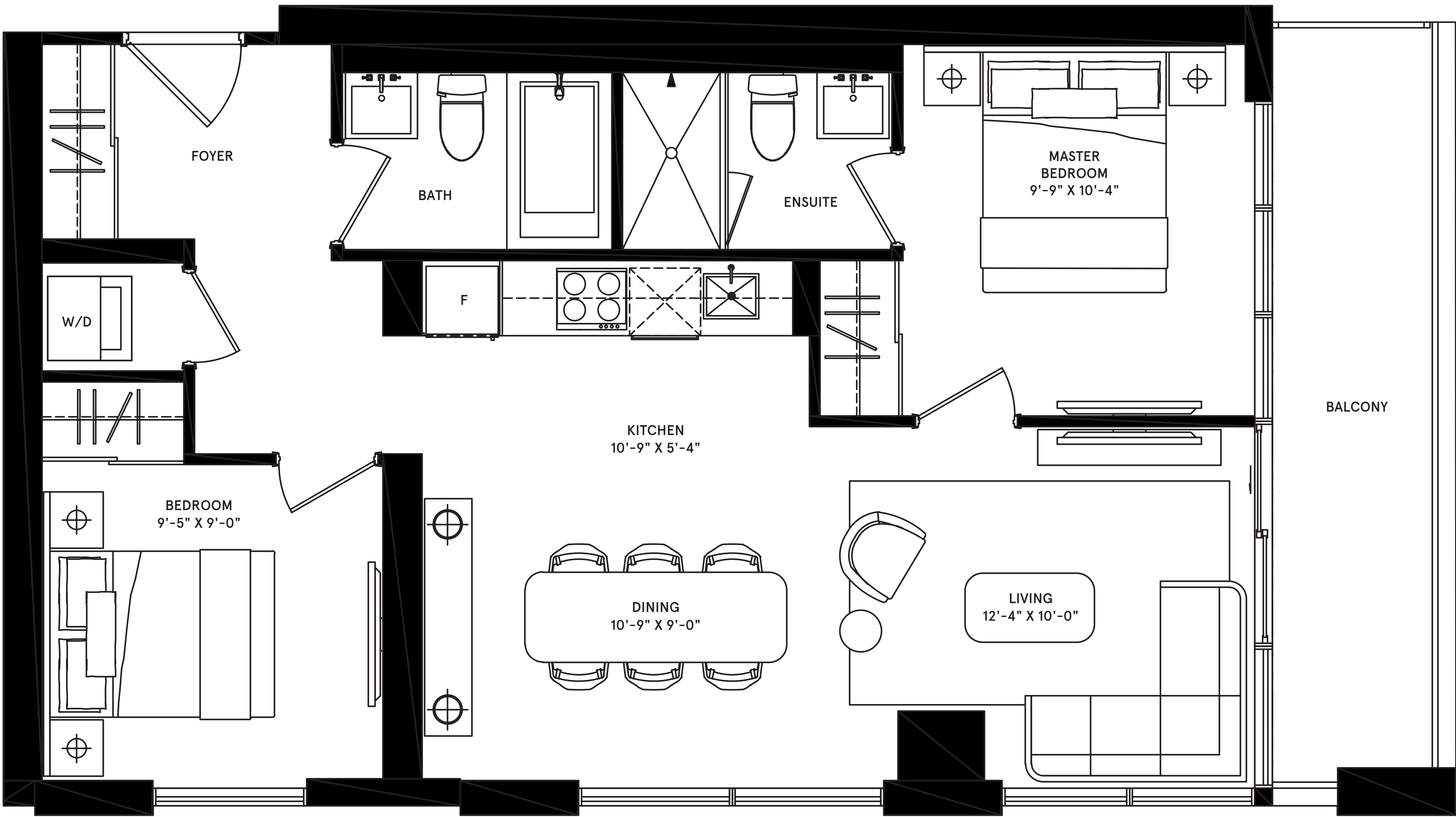
Dimensions, specifications, layouts (including but not limited to tile patterns), window sizes, mullions, fixture representation, appliance and fixture locations, and materials are approximate only, may vary, and are subject to changes without notice as provided in the Agreement of Purchase and Sale. Plans may be reversed. Wall thickness will vary with floor levels reducing room dimensions accordingly. Actual usable floor space may vary from the stated floor area. Measurements of rooms set forth on any floor plan are generally taken at the greatest points of each given room and centre line of windows (as the room perfectly rectangular). Furniture is not included. Furniture shown on terrace spaces should be secured for safety. Prices are subject to change without notice. E. & O. Plans not to scale. For more information on the method used for calculating floor area of any unit, reference should be made to Builder Bulletin No. 22 published by Tarion.

EX 2

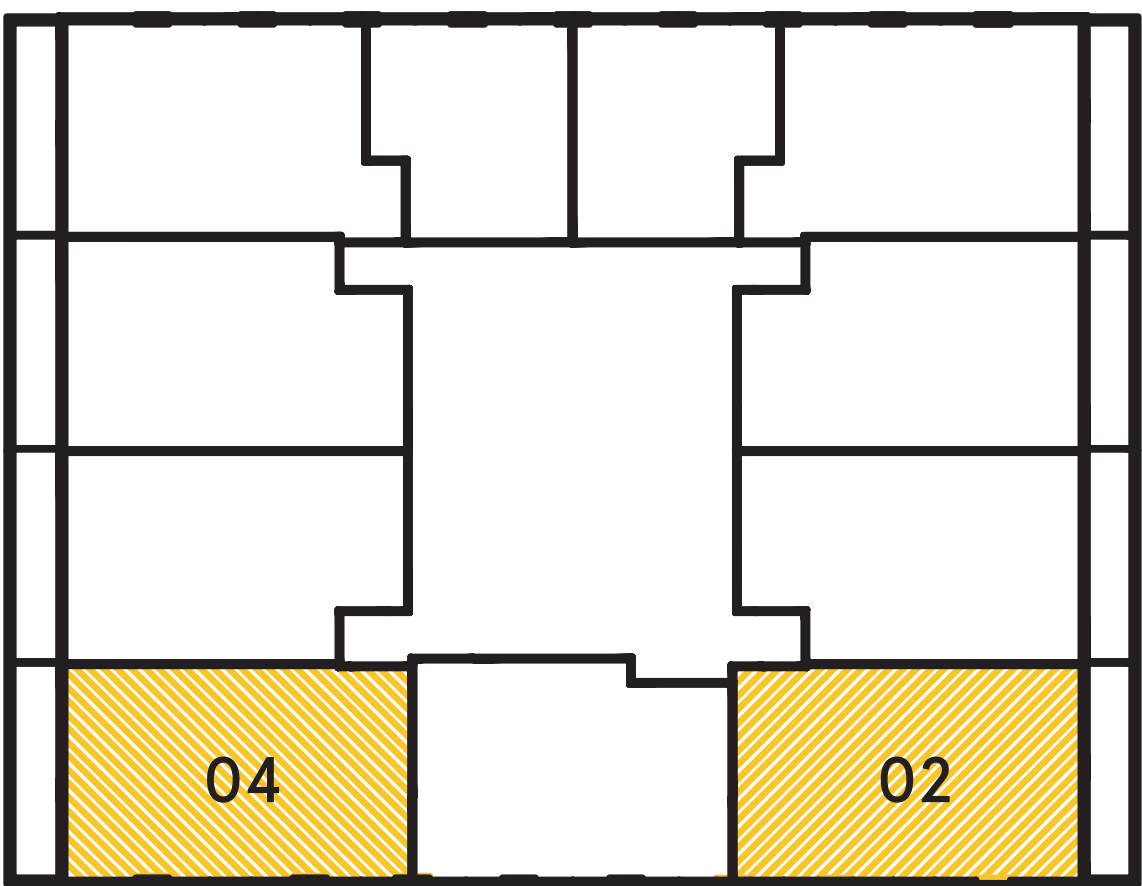
# munich

2 BEDROOM  
total: 845 sq.ft.

interior: 749 sq.ft.  
exterior: 96 sq.ft.



NORTH  
LOWER - TYPICAL



CAMROST  
FELCORP.  
EST 1976  
Building Excellence

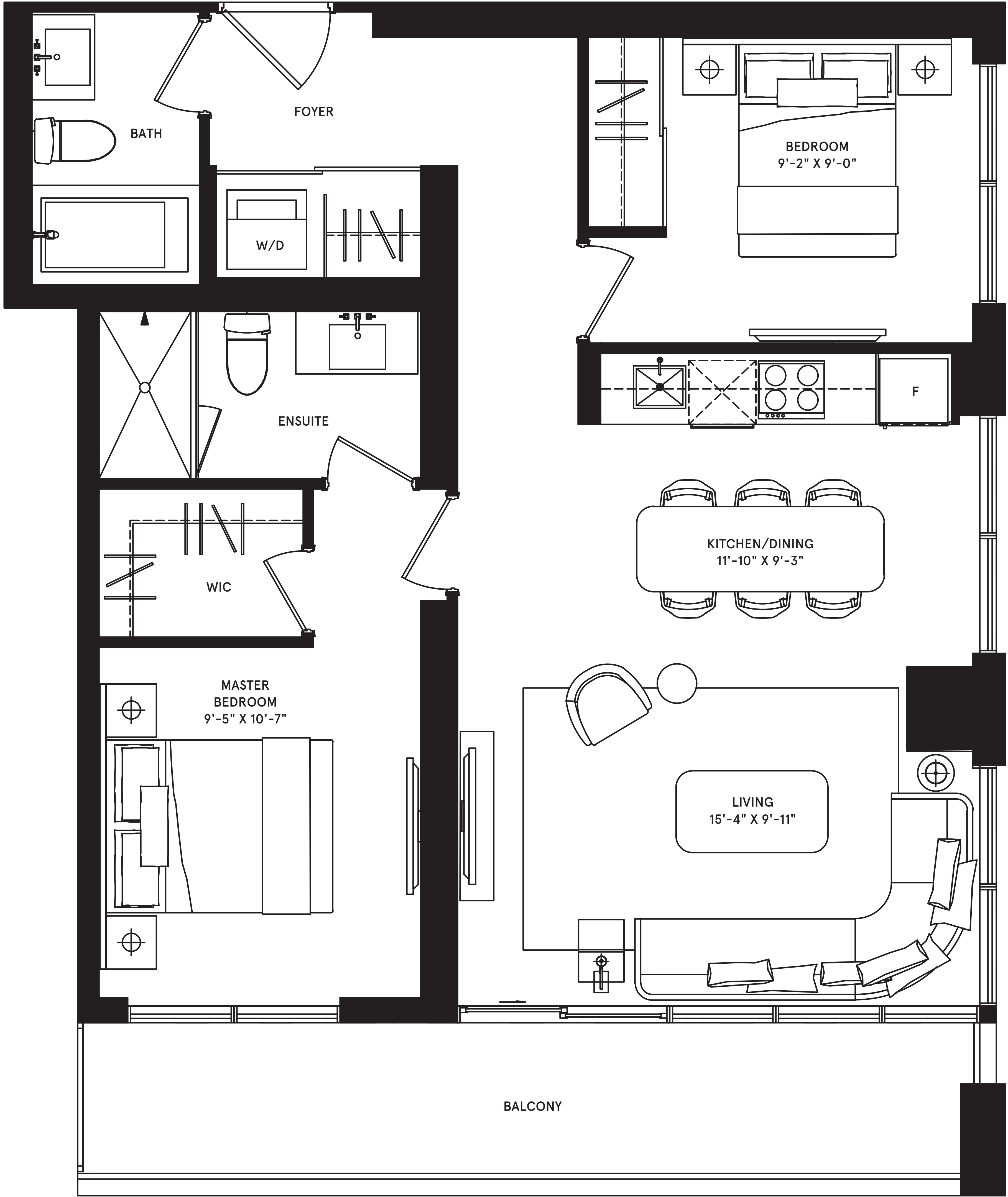
Dimensions, specifications, layouts (including but not limited to tile patterns), window sizes, mullions, fixture representation, appliance and fixture locations, and materials are approximate only, may vary, and are subject to changes without notice as provided in the Agreement of Purchase and Sale. Plans may be reversed. Wall thickness will vary with floor levels reducing room dimensions accordingly. Actual usable floor space may vary from the stated floor area. Measurements of rooms set forth on any floor plan are generally taken at the greatest points of each given room and centre line of windows (as if the room were perfectly rectangular). Furniture is not included. Furniture shown on terrace spaces should be secured for safety. Prices are subject to change without notice. E. & O. E. Plans are not to scale. For more information on the method used for calculating floor area of any unit, reference should be made to Builder Bulletin NO. 22 published by Tarion.



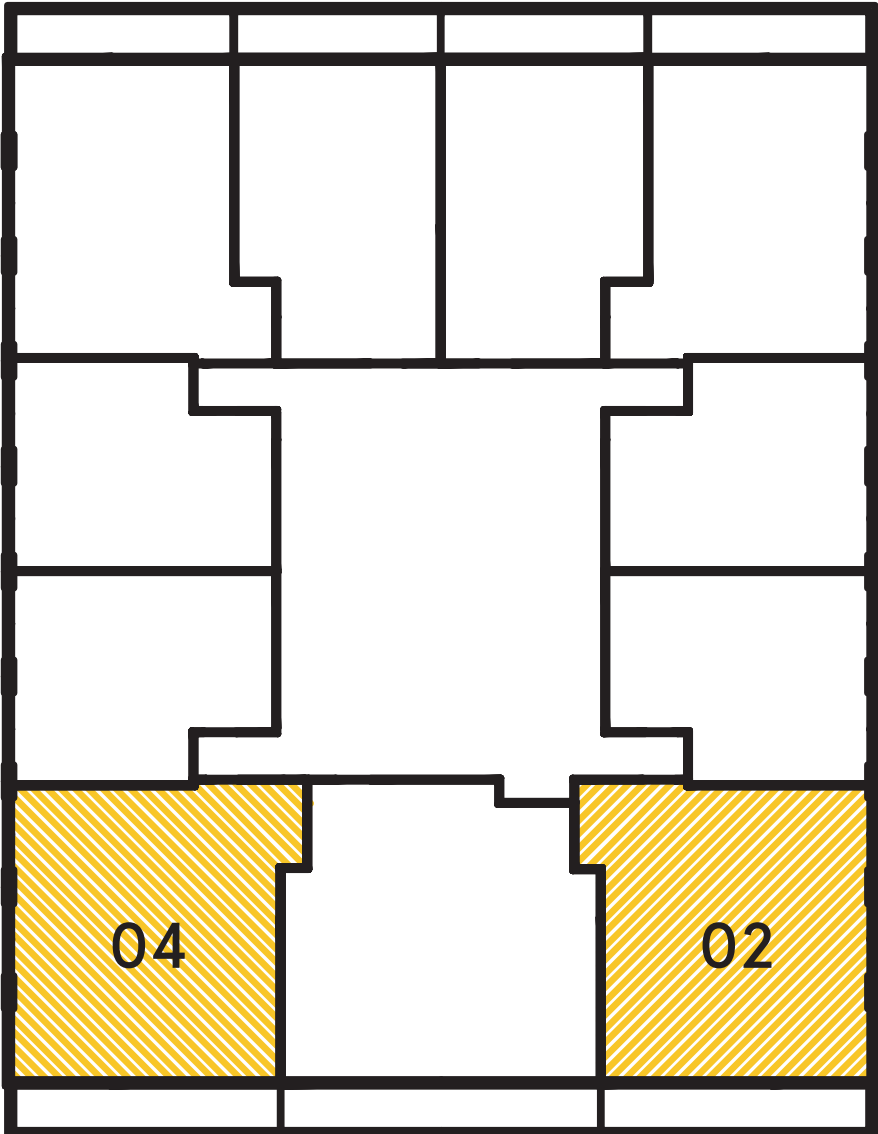
manila

2 BEDROOM  
total: 949 sq.ft.

interior: 820 sq.ft.  
exterior: 129 sq.ft.



NORTH  
UPPER – TYPICAL



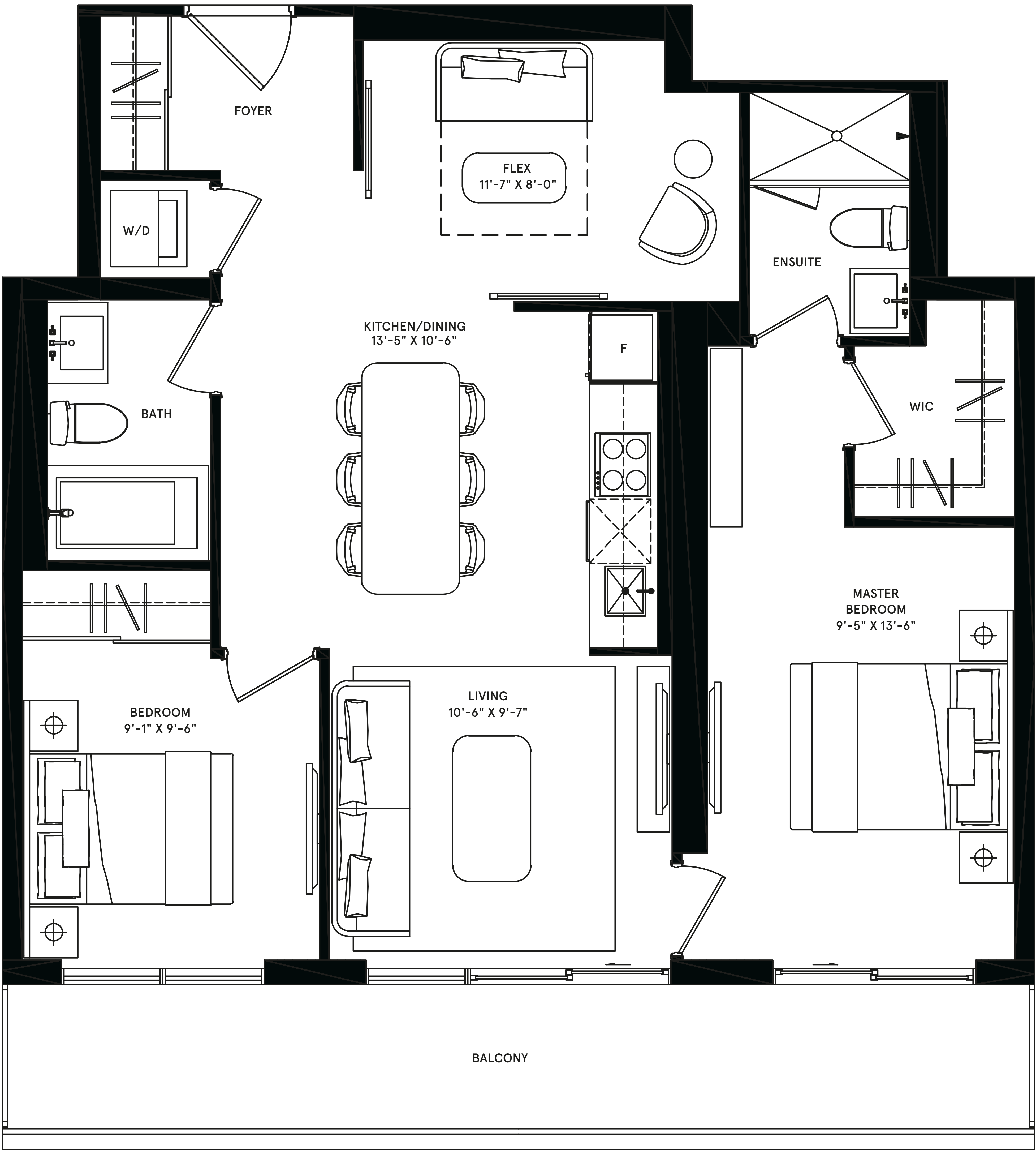
# chicago

2 BEDROOM + FLEX

total: 1,037 sq.ft.

interior: 885 sq.ft.

exterior: 152 sq.ft.



NORTH

UPPER – TYPICAL

